

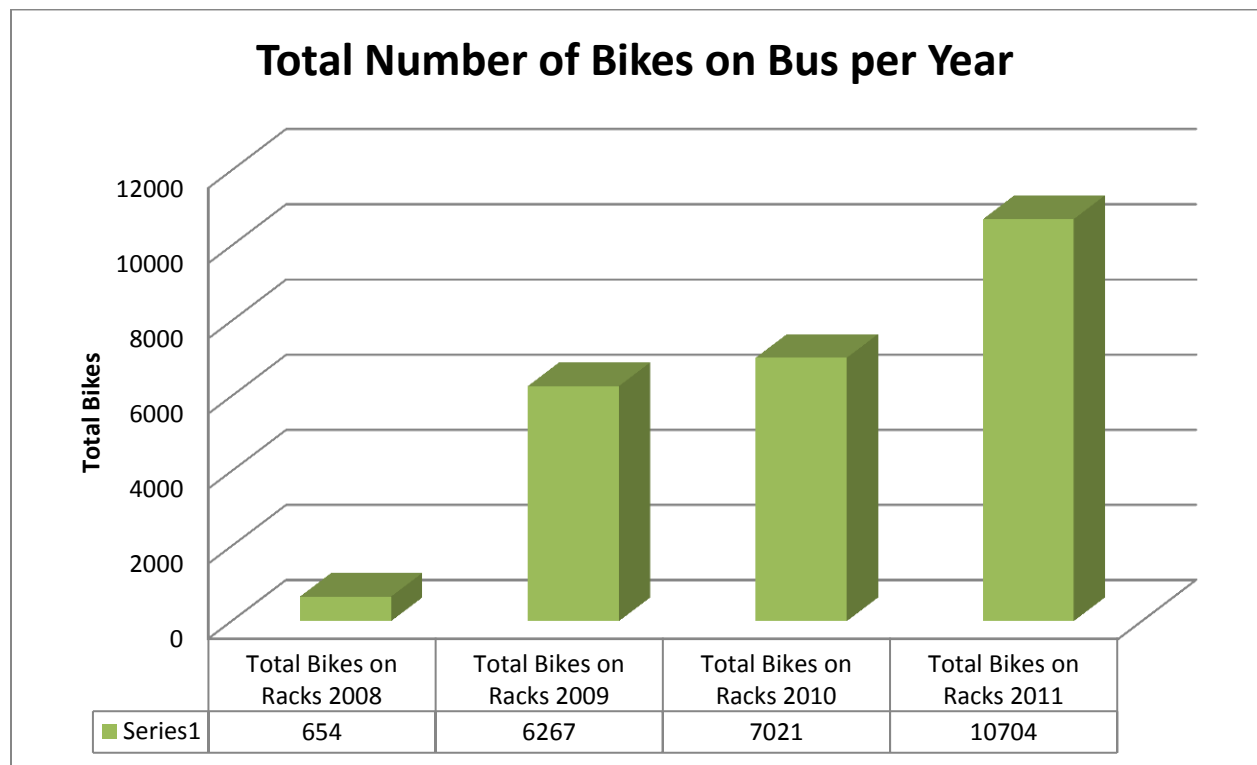


Omaha Metro Bikes on Buses 2011 Year End Report

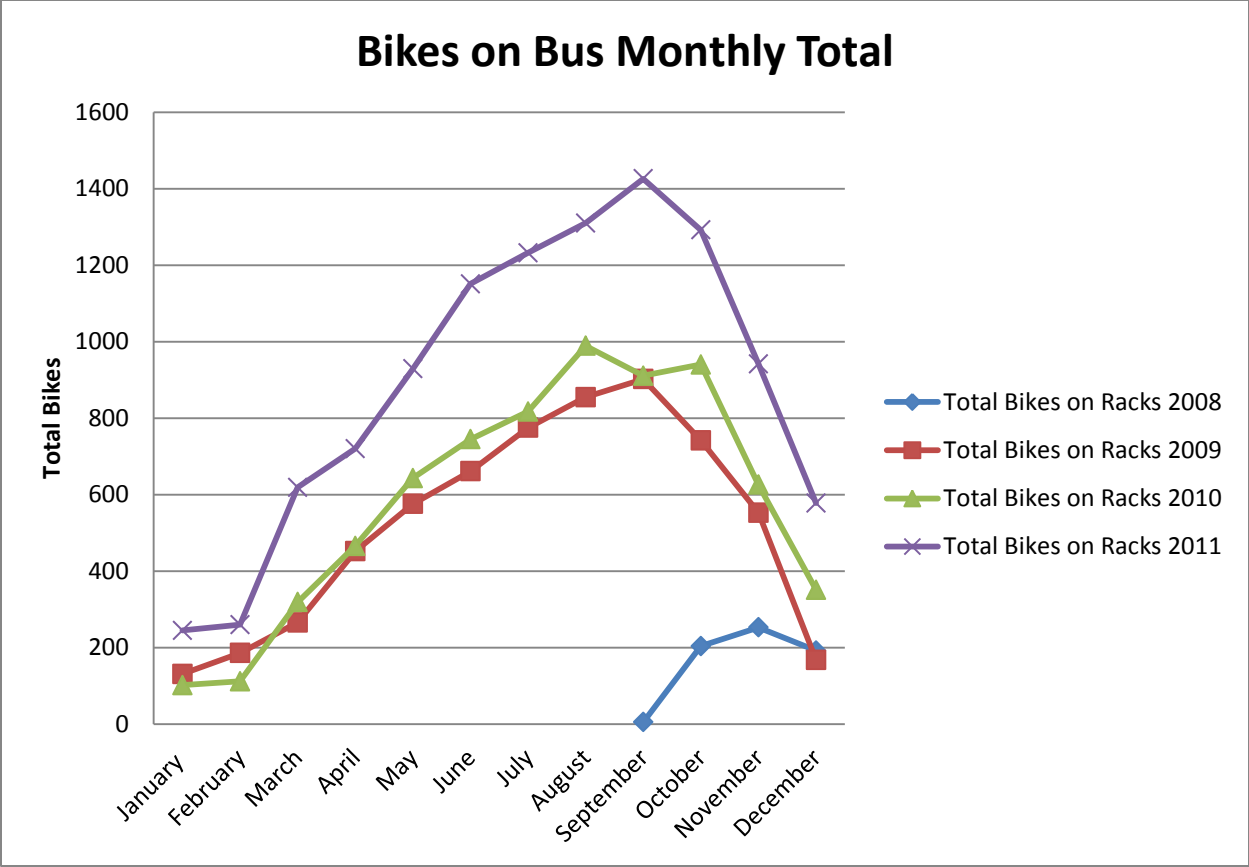


In 2008, Omaha Metro was able to leverage Federal Transportation Administration funds to equip the Metro bus fleet with front loading bicycle racks. The entire bus fleet that serves the Omaha Metro area is equipped with front loading bicycle racks with a capacity to carry two bicycles. The racks are free to use and are available for use on a first-come, first-served basis. The bicycle racks were fully implemented and started service on Monday, September 29, 2008.

The initial 2008 year there were over 650 users in a four month period. The following year saw a dramatic increase in usage with over 6,200 users. In order to create a better comparison 2008 saw 654 total users in the months September to December. During that same time period in 2009 there were a total of 2,365 users. This indicates that within a 1 year period there was a 200% increase. The bicycle racks continued the upward trend in the following years. In 2010, bikes on buses saw a 12% increase with 7,021 bicycles counted on Metro Buses. Most recently in 2011, bicycle racks on buses saw over 10,704 users indicating an increase of over 50% from the previous year.



When comparing the users of the bike racks on buses on a monthly basis the highest number of users take place during the fall when the climate is neither too hot nor too cold. Starting around September bikes on buses begins to decrease closely following the drop in temperatures. 2011 was the first year that over a thousand bikes on buses were recorded in a one month period.



The Metro bikes on buses program is just a small snapshot that shows how our community is embracing bicycling as a form of transportation and how bicycling is becoming more and more popular in our community. We look forward to seeing this upward trend continue in the coming years as the City of Omaha begins to implement the Transportation Master Plan and new facilities are introduced making connections even easier.